

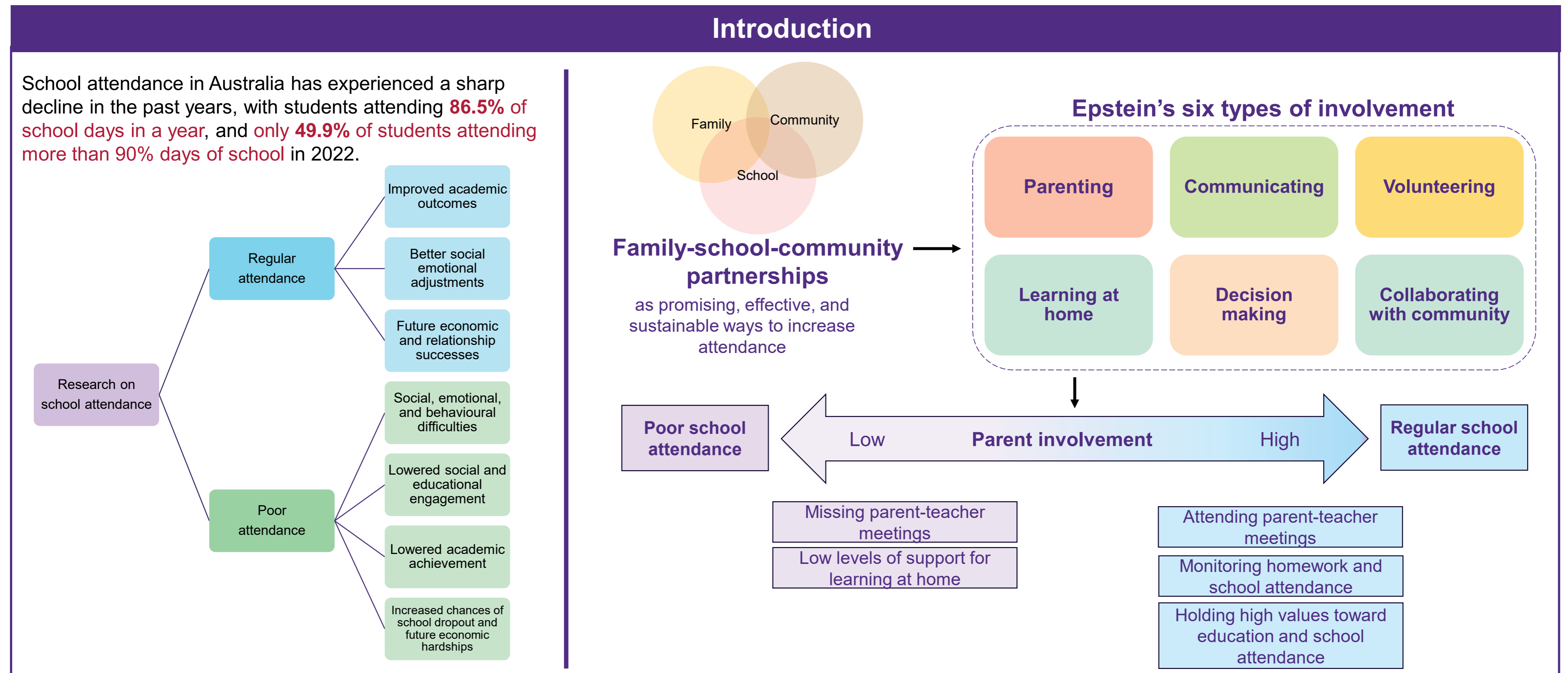
Family-school partnership initiatives to improve student attendance: A systematic review protocol

Contributors: Professor Annemaree Carroll¹, Dr Deborah Lynch², Associate Professor Elizabeth J. Edwards¹, Tarissa J. Hidajat¹

(The contributors are listed in an alphabetical order until a manuscript of the review is submitted for publication.)

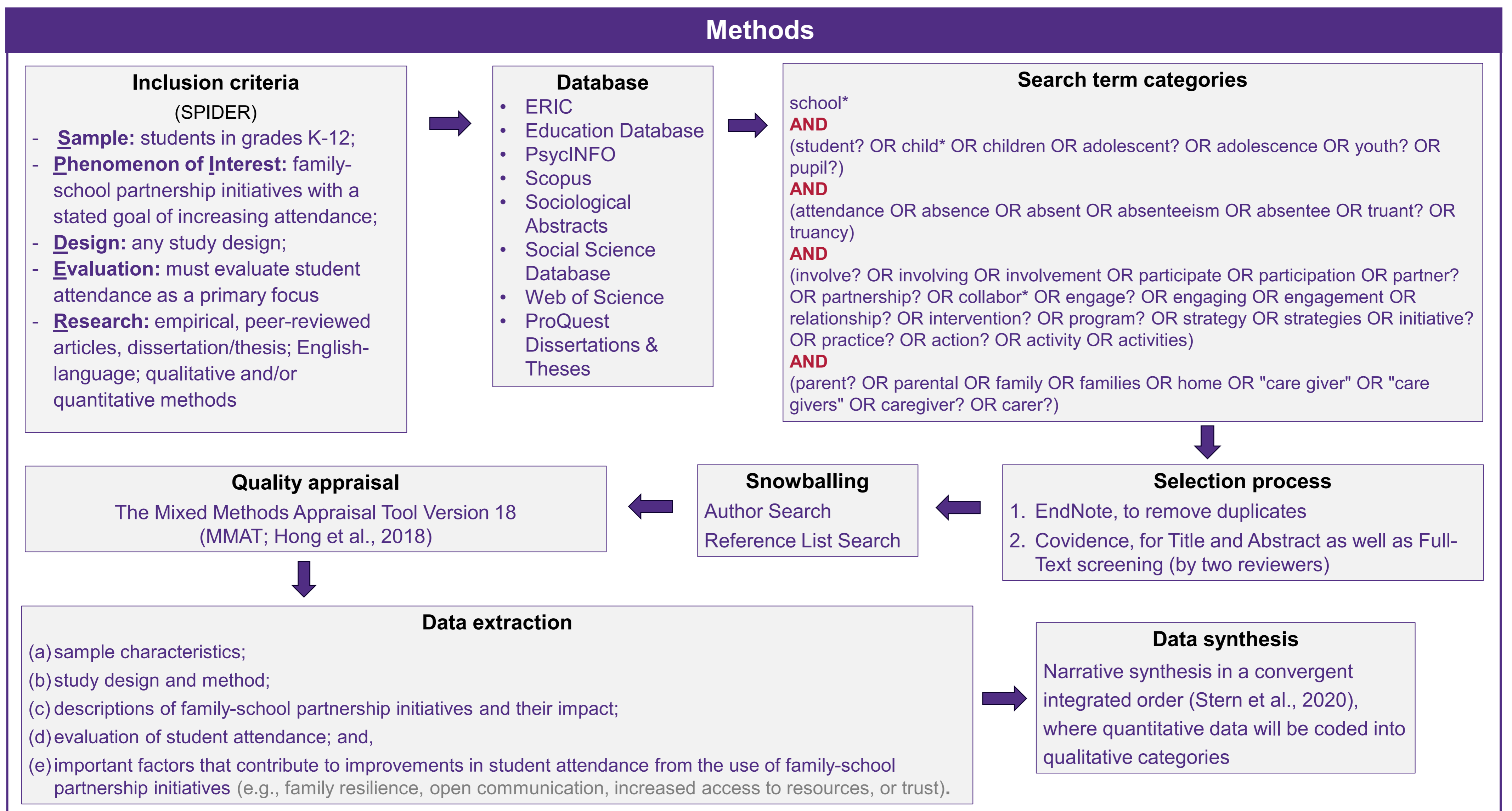
¹ School of Education, The University of Queensland, St Lucia, QLD, Australia

² School of Nursing, Midwifery and Social Work, The University of Queensland, St Lucia, QLD, Australia



Research questions:

1. How have schools involved families (where families can be parents, other adult family members, significant non-familial adults, caregivers, or kinship carers) in promoting student attendance, and what was the impact?
2. What factors in the family-school interactions were shown to be important in improving student attendance?



Expectation

We expect the findings on family-school partnership initiatives to improve student attendance to align with, or even extend, Epstein's framework of six types of involvement.